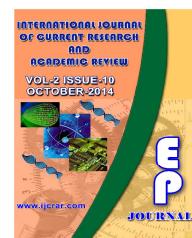




*International Journal of Current Research  
and Academic Review*

ISSN: 2347-3215 Volume 2 Number 10 (October-2014) pp. 17-24

[www.ijcrar.com](http://www.ijcrar.com)



**Comparision of Male and Female Genitalia of *Culex* species with Scanning Electron Microscopy (SEM)**

Jagbir Singh Kirti, Shipali\* and Jasneet Kaur

Department of Zoology and Environmental Sciences, Punjabi University, Patiala- 147002, India

\*Corresponding author

**KEYWORDS**

SEM, genitalia, *Culex vishnui* and *Culex pseudovishnui*.

**A B S T R A C T**

The genitalic structure of male and female mosquitoes of two species belonging to genus *Culex* i.e *Culex (Culex) vishnui* Theobald and *Culex (Culex) pseudovishnui* Colless is studied morphologically and illustrated with the aid of Scanning Electron Microscope (SEM) from Punjab.

**Introduction**

The species or different forms of it, has a wide distribution throughout African continent including even the Central Sahara and it also occurs in Madagascar. It is widely distributed throughout the Mediterranean region from Punjab (Edwards, 1941; Mattingly, 1954). *Culex vishnui* has been confused with *Culex pseudovishnui* in the past due to their close resemblance; they are definitely distinct species, which are easily distinguished by larval and genitalic characters. The larvae of *Culex vishnui*, *Culex pseudovishnui* and *Culex tritaeniorhynchus* were common in rice fields where they aggregated near the edges of paddy fields during early rice growing season, April to May. In addition to *Culex tritaeniorhynchus*, *Culex vishnui* is possibly one of the important vectors of Japanese Encephalitis virus in Southeast Asia, because of difficulty in separating the adults from sympatric sibling species, *Culex*

*pseudovishnui* and *Culex tritaeniorhynchus*, its significance in natural transmission of disease has not yet been clearly established Miyagi *et al.* (1992). In Taiwan, (Cates and Detels, 1969) found *vishnui* to be only Japanese Encephalitis virus positive mosquito and concluded that it was the important vector of this disease. Regarding breeding sites both the species having similar habitat like open cultivated lands such as rice fields, stagnant pools, pits and edges of swamps. Their preferred hosts include cows, buffaloes, pigs etc. They also attack on man occasion. These species has been found to be involved in cycle of West Nile virus in Egypt and becoming probably infected from birds (Taylor *et al.*, 1956). The Southeast Asian *Culex vishnui* complex has attracted much attention because of its importance as potential vectors of Japanese Encephalitis virus and related arboviruses (Sirivanakarn, 1976).

Work done on the above said species by Barruad (1934), Bram (1967), Colless (1957), Delfinado (1966), Hara (1957), Jupp and Brown (1967), LaCasse and Yamaguti (1950), Matsuo (1959, 1968 & 1970), Matsuo and Ramalingam (1971& 1972), Matsuo and Iwaki (1972), Miyagi (1971), Miyagi *et al.* (1992), Reuben (1969, 1971a & 1971b), Sagandeeep and Kirti (2006), Sirivanakarn (1975, 1976), Theobald (1901), Yamamoto (1969).

### Material and methods

Adult mosquitoes were procured with the help of oral aspirators, test tubes, torch and insect collecting nets from gardens, cattle sheds, hay stacks, nurseries, forests and human dwellings from the different districts of Punjab. For the identification of species keys given by Darsie and Pradhan (1990), Sirivanakarn (1976), Huang (1979), Reinert *et al.* (2004) and Reuda (2004) and terminology given by Harbach and Knight (1980) and for SEM studies protocol given by Chaudhry and Gupta (2004) and Lee and Craig (1983) was followed. For genitalic studies, the last two abdominal segments of adult male and female mosquitoes were snipped off with fine forceps from their body.

These abdominal tips were boiled in 10% KOH solution until their clearance. Dissected material washed several times with water and dehydrated by passing through ascending grades of alcohol. The specimens were placed on stubs in dorsal positions after air drying on filter paper and coated with gold. After that images were observed under JSM-6610LV SEM.

### Result and Discussion

Regarding genitalia, several characters i.e. basistyle, dististyle, subapical lobe, paraproct, aedeagus, phallosome etc. are

important for species identification. Female genitalia are important to point out that spermatheca located inside abdomen and its morphological architecture as well as its number is used as taxonomic characters. (Alexander- Pires, 2010).

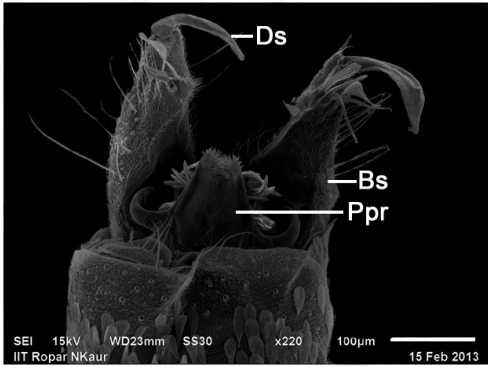
### Male genitalia

***Culex vishnui***: Dististyle arcuate and flanged laterally along with two minute papillated hair and subapical claw bilobed at apex (Fig. 7); basistyle conical and abruptly tapered beyond the subapical lobe with long setae on lateral side and small setae on dorsal surface (Fig. 1); subapical lobe with (a-h) setae all of varying size and length (Fig. 6).

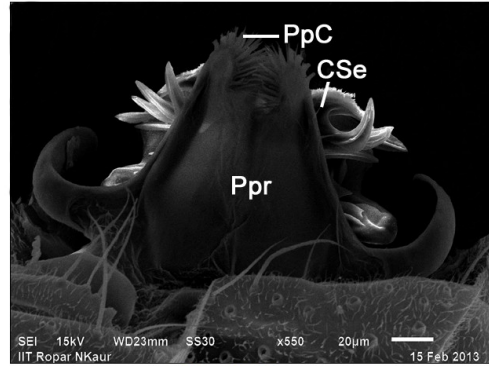
Seta a very elongated and bent downwardly, b long with sharp apex, d leaf like, e and f rod like, g acuminate apically in the present studies but it is of axe shaped according to Sagandeeep and Kirti (2006) and h small in size; inner division of lateral plate of phallosome having nine finger like projections (Fig. 4). Out of nine projections, five long and well developed, other four short and poorly developed (Sagandeeep and Kirti, 2006).

However, these finger like projections give palmate like appearance with varying length i.e. first two longest, three medium and 4-5 shorter with their apices reaching beyond apical margin of spiculate sternal process; rest four on other side comparatively shorter; inner sternal spiculate process not completely separated from outer division bears numerous spines (Sagandeeep and Kirti, 2006); outer division with strong mesal spine with bifid apex and a strong sternal spine with pointed apex; basal sternal process (Fig. 3) dark, stout, long, curved and well developed; cercal setae (Fig. 2) two in number on proximal region of paraproct.

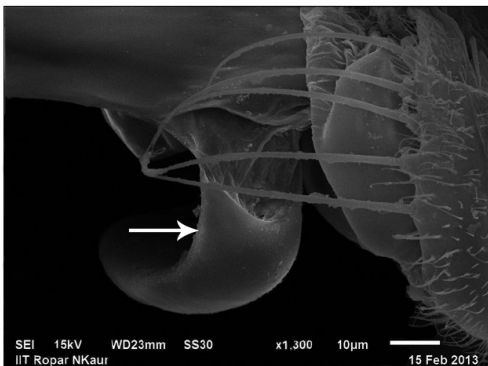
**Male Genitalia of  
*Culex (Culex) vishnui* Theobald**



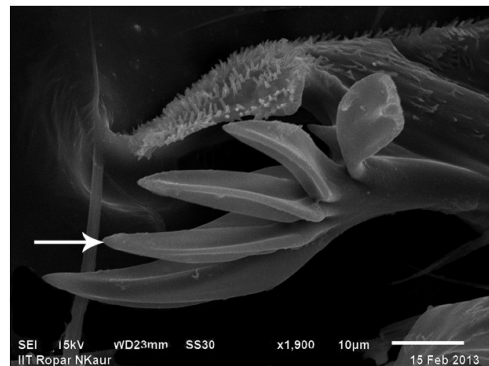
**Fig. 1 Male Genitalia**



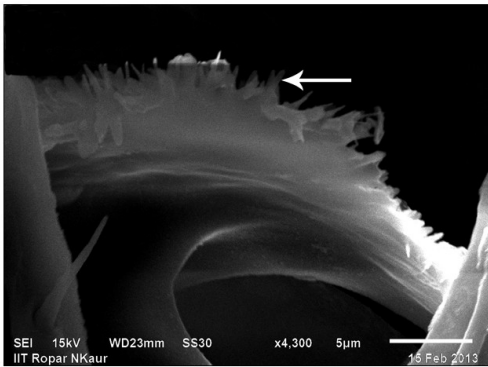
**Fig. 2 Paraproct**



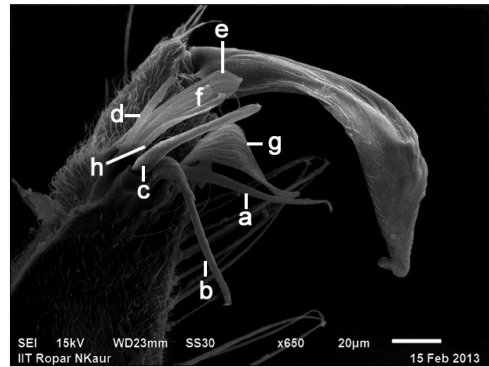
**Fig. 3 Basal Sternal Process**



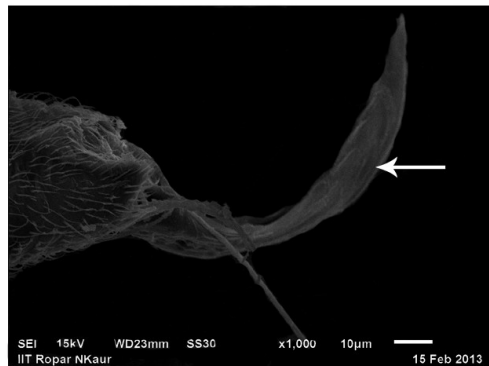
**Fig. 4 Finger-like projections**



**Fig. 5 Spines on Inner Division**



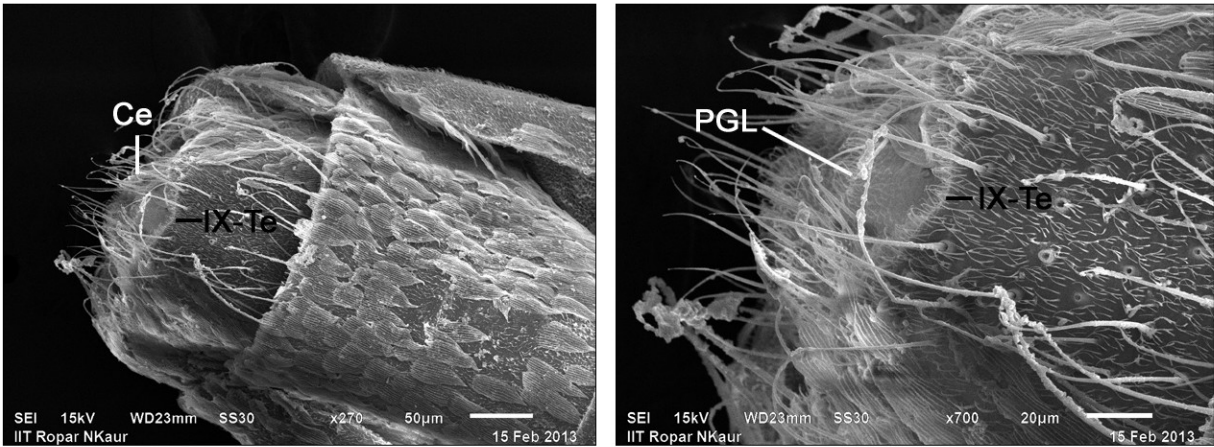
**Fig. 6 Subapical Setae**



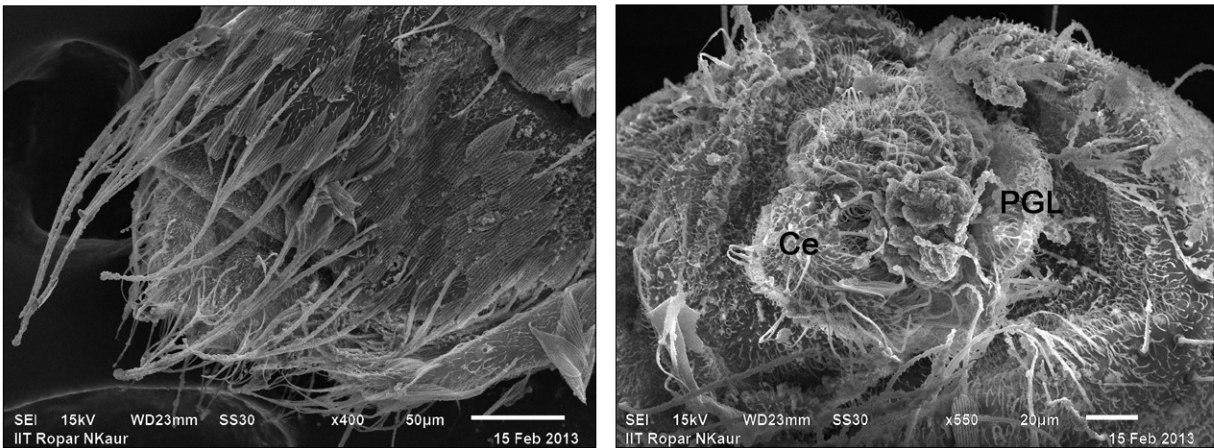
**Fig. 7 Dististyle**



**Female Genitalia of  
*Culex (Culex) vishnui* Theobald**

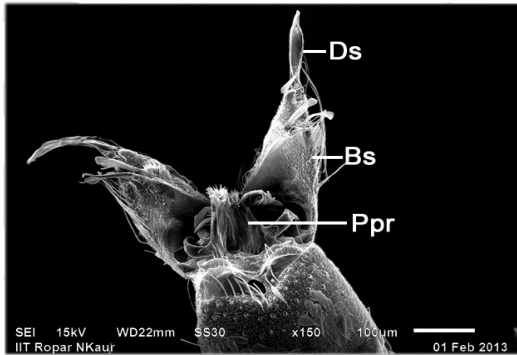


**Fig. 8 & 9 Female Genitalia**

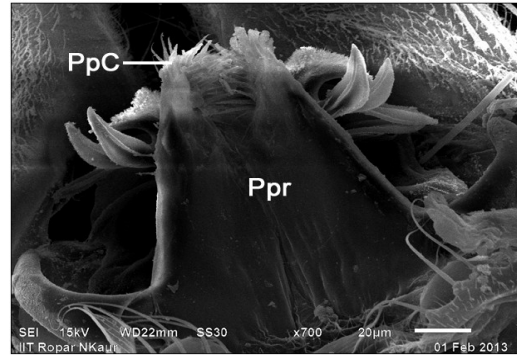


**Fig.10 & 11 Female Genitalia (Slightly lateral view)**

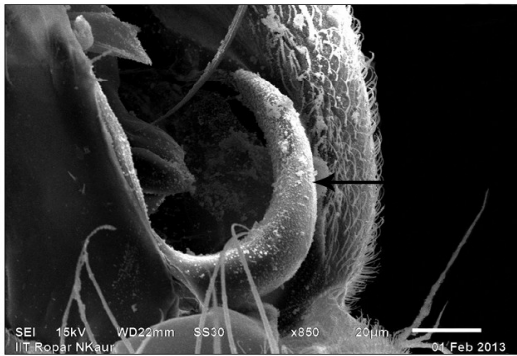
**Male Genitalia of  
*Culex (Culex) pseudovishnui* Colless**



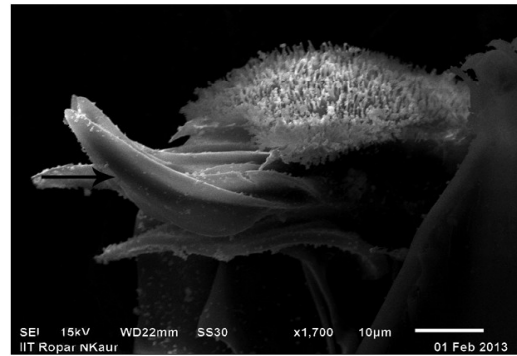
**Fig. 12 Male Genitalia**



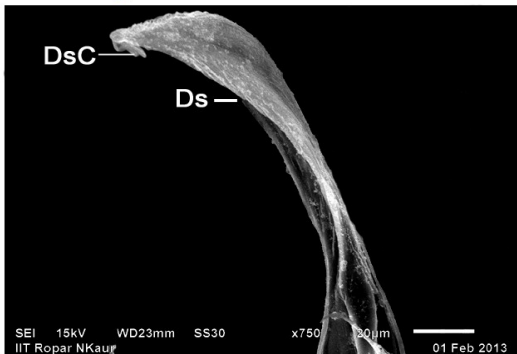
**Fig. 13 Paraproct**



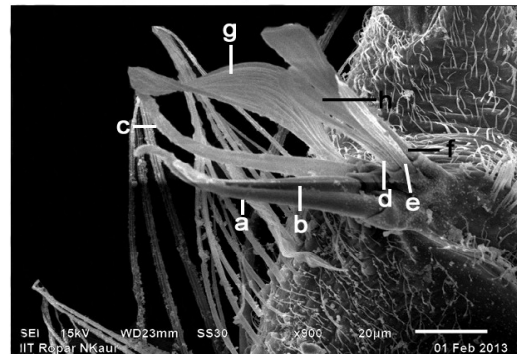
**Fig. 14 Basal Sternal Lobe**



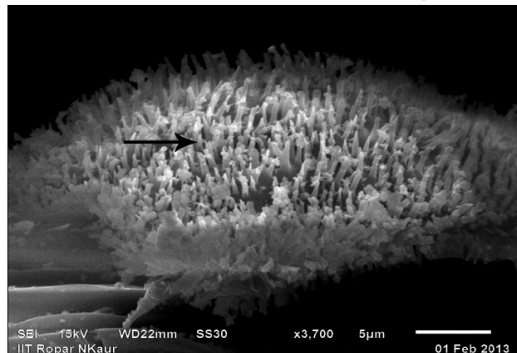
**Fig. 15 Finger-like projections**



**Fig. 16 Dististyle**



**Fig. 17 Subapical Setae**



**Fig. 18 Spines on spiculate  
portion of inner division**



## Female Genitalia of *Culex (Culex) pseudovishnui* Colless

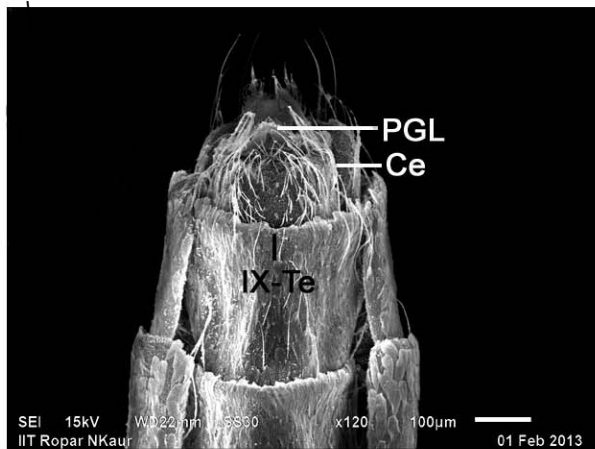


Fig. 19 Female Genitalia

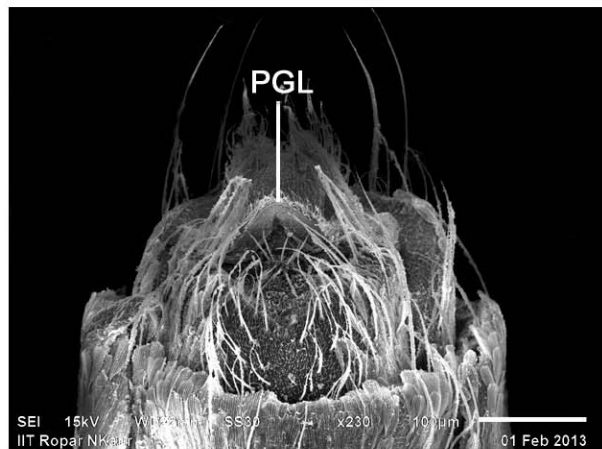


Fig. 20 Postgenital Lobe

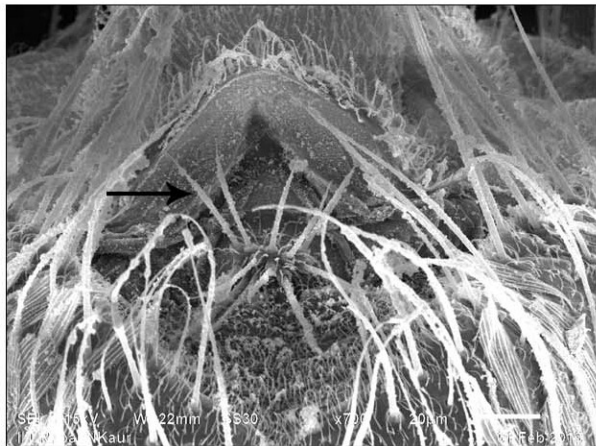


Fig. 21 Postgenital Lobe  
(Showing Setae)

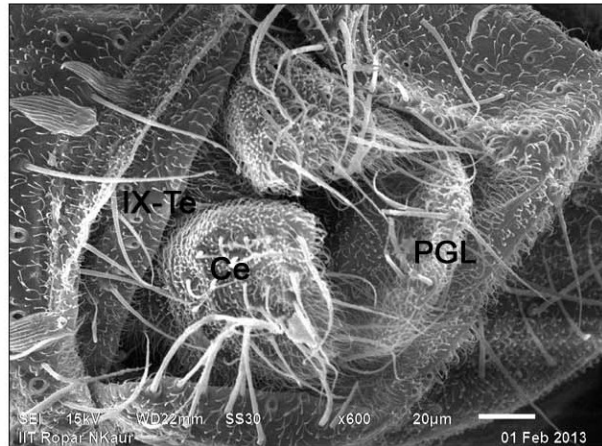


Fig. 22 Female Genitalia  
(Slightly Lateral view)

*Culex pseudovishnui*: Basistyle (Fig. 12) having elongated dististyle (Fig. 16) with bilobed claw at tip; subapical lobe bearing various types of (a–h) setae (Fig. 17). Seta a prominent, b elongated, c flattened at apex and having spatulate appearance, d, e and f long, thin and rod like with curved apices, g broad, acuminate or rounded apically, h hair like in appearance; lateral plate of phallosome has both inner and outer divisions; paraproct bearing numerous

crown of setae at tip (Fig. 13); inner division of lateral plate of phallosome having eight finger like projections (Fig. 15) four on one side and four on the other, giving appearance of palmate process; inner sternal spiculate portion not completely separated from outer division having numerous spines (Fig. 18); 1-2 pair of cercal setae observed at the proximal and distal end of paraproct (Fig. 13); basal sternal process well developed, long and stout (Fig. 14).

## Female genitalia

***Culex vishnui*:** Cerci short with numerous setae on the dorsal surface (Fig. 8 & 9); tergum IX slightly curved with minute row of setae (Fig. 10 & 11).

***Culex pseudovishnui*:** Cerci moderately smaller in size with numerous large setae; postgenital lobe (Fig. 20 & 21) bears five pair of setae on its margin; tergum IX forming a U- shaped structure with 6-7 setae (Fig. 22).

*Culex pseudovishnui* species has been most frequently misidentified as *vishnui*. During this study an attempt was made to correlate the differences between two species with varying genitalic attributes. Although genitalia of *Culex vishnui* was studied earlier by Sagandeeep and Kirti (2006). In the present research work, genitalia of above said species is compared with the previous one and try to find out some new and additional taxonomic attributes. The work on genitalia of *Culex pseudovishnui* of male and female mosquitoes is done for the first time in Punjab.

## Abbreviations

Bs (Basistyle), Ce (Cerci), CSe (Cercal Seta), Ds (Dististyle), PGL (Post Genital Lobe), PpC (Paraproct Crown), Ppr (Paraproct) and IX-Te (IX- Tergum).

## References

Alexander-Pires, G., Ramilo, D., Diaz, S., Meireles, J., Boinas, F., Fonseca, I.P.D. 2010. Investigating morphological structures of *Culicoides* from *obsoletus* complex by using scanning electron microscopy and compressed optical microscopy. *Formatax*, 792–802.

Barruad, P.J. 1934. The fauna of British India including Ceylon and Burma. Diptera 5,

family Culicidae, tribe Megarhinini and Culicini. Taylor and Francis, London.

Bram, R.A. 1967. Contribution to the mosquito fauna of Southeast Asia- II. The Genus *Culex* in Thailand (Diptera: Culicidae). *Contrib. Am. Entomol. Inst.*, 2: 1–296.

Cates, M.D., Detels, R. 1969. Japanese Encephalitis virus in Taiwan: Preliminary evidence for *Culex annulus* Theobald as a vector. *J. Med. Entomol.*, 6: 327–328.

Chaudhry, S., Gupta, S. 2004. Scanning electron microscopic studies on the egg architecture of *Anopheles (Cellia) stephensi* Liston (Diptera: Culicidae). *Proc. Zool. I. Soc. Calcutta.*, 57(1): 1–4.

Colless, D.H. 1957. Notes on the Culicine mosquitoes of Singapore- II. The *Culex vishnui* group (Diptera: Culicidae) with description of two new species. *Ann. Trop. Med. Parasit.*, 51: 87–101.

Darsie, R.E., Pradhan, S.P. 1990. The mosquitoes of Nepal: their identification, distribution and biology. *Mosq. Syst.*, 22: 69–130.

Delfinado, M.D. 1966. The Culicine mosquitoes of the Philippines. Tribe Culicini (Diptera: Culicidae). *Mem. Am. Ent. Inst.*, 7: 252.

Edwards, F.W. 1941. Mosquitoes of Ethiopian region III. Culicine adults and pupae. Lond.: British Museum (Nat. Hist.).

Hara, J. 1957. Studies on female terminalia of Japanese Mosquitoes. *Jap. J. Exp. Med.*, 27(1-2): 45–91.

Harbach, R.E., Knight, K.L. 1980. Taxonomist's glossary of mosquito anatomy. Plexus Publishing, Marlton, NJ. Pp. 1–413.

Huang, Y.M. 1979. Medical Entomology studies- XI. The subgenus *Stegomyia* of *Aedes* in the Oriental region with keys to the species (Diptera: Culicidae). *Contrib. Am. Entomol. Inst.*, 15(6): 1–79.

Jupp, P.G., Brown, R.G. 1967. The laboratory colonization of *Culex (Culex) univittatus* Theobald (Diptera: Culicidae) from material collected in the Highveld region of South Africa. *J. Ent. Soc. Sth. Afr.*, 30: 34–39.

LaCasse, W.J., Yamaguti, S. 1950. Mosquito fauna of Japan and Korea. Off. Surgeon, 8<sup>th</sup> U.S. Army, Kyoto.

Lee, R.M.K.W., Craig, D.A. 1983. Cibarial

- sensilla and armature in mosquito adults (Diptera: Culicidae). *Can. J. Zool.*, 61(3): 633–646.
- Matsuo, K. 1959. Taxonomic studies on *Culex tritaeniorhynchus* Giles and *Culex vishnui* Theobald. *J. Kyoto Pref. Med. Univ.*, 65: 581–621.
- Matsuo, K., 1968. Morphological studies on *Culex vishnui* group of Japan. Abstract of the 61<sup>st</sup> Annual Meeting of Formosan Medical Association.
- Matsuo, K. 1970. Morphological and ecological studies of *Culex tritaeniorhynchus* and *Culex pseudovishnui* adults. Abstract of the 25<sup>th</sup> Regional Meeting of Japanese Journal of Sanitary Zoology.
- Matsuo, K., Ramalingam, S. 1971. On *Culex tritaeniorhynchus* and *Culex pseudovishnui*. X. Morphological characters of *Culex pseudovishnui* larvae from Malaysia. The 23<sup>rd</sup> Annual Meeting of Japanese Sanitary Zoology.
- Matsuo, K., Ramalingam, S. 1972. Morphological characters of *Culex pseudovishnui* from Malaysia, Japan and Formosa. *Southeast Asian J. Trop. Med. Pub. Hlth.*, 3: 55–61.
- Matsuo, K., Iwaki, M. 1972. Morphological differences between *Culex tritaeniorhynchus* and *Culex pseudovishnui* adults from Japan. *J. Kyoto Pref. Univ. Med.*, 81(7): 349–357.
- Mattingly, P.F. 1954. The distribution of some African mosquitoes. *Pro. Linn. Soc. Lond.*, Pp. 1–165.
- Miyagi, I. 1971. *Culex vishnui* group from Philippines. The 23<sup>rd</sup> Annual Meeting of Japanese Sanitary Zoology.
- Miyagi, I., Toma, T., Hasegawa, H., Tadano, M., Fukunaga, T. 1992. Occurrence of *Culex* (*Culex*) *vishnui* Theobald on Ishigakijima, Ryukyu Archipelago. *Jpn. J. Sanit. Zool.*, 43(3): 259–262.
- Reinert, J.F., Harbach, R.E., and Kitching, I. 2004. Phylogeny and classification of Aedini (Diptera: Culicidae) based on morphological characters of all life stages. *Zool. J. Linn. Soc.*, 142: 289–368.
- Reuben, R. 1969. A redescription of *Culex vishnui* Theobald with notes on *Culex pseudovishnui* Colless and *Culex tritaeniorhynchus* Giles, from Southern India. *Bull. Ent. Res.*, 58: 643–652.
- Reuben, R., 1971a. Studies on the mosquitoes of North Arcot district, Madras State, India. Part IV. Breeding places of *Culex vishnui* group of species. *J. Med. Entomol.*, 8: 363–367.
- Reuben, R. 1971b. Studies on the mosquitoes of North Arcot district, Madras State, India. Part VI. Seasonal prevalence of *Culex vishnui* group of species. *J. Med. Entomol.*, 8: 367–371.
- Reuda, L.M. 2004. Pictorial keys for the identification of mosquitoes (Diptera: Culicidae) associated with Dengue Virus Transmission. *Zootaxa.*, 589: 1–60.
- Sagandeep, K., Kirti, J.S. 2006. Current analysis of sensilla and other structures on the body appendages of three Indian *Culex* species: 193–211. In: Sharma, V.P. and Kirti, J.S. (Eds), Vector Biology. National Academy of sciences India, Allahabad. Pp. 256.
- Sirivanakarn, S. 1975. The systematic of *Culex vishnui* complex in Southeast Asia with the diagnosis of three common species (Diptera: Culicidae). *Mosq. Syst.*, 7: 69–85.
- Sirivanakarn, S. 1976. A revision of the subgenus *Culex* in the Oriental region (Diptera: Culicidae). *Contrib. Am. Entomol. Inst.*, 12: 1–186.
- Taylor, R.M., Work, T.H., Hurlbut, H.S., Rizk, F. 1956. A study of the ecology of West Nile virus in Egypt. *Amer. J. Trop. Med. Hyg.*, 5: 579–620.
- Theobald, F.V. 1901. A monograph of the Culicidae or mosquitoes I. London: Brit. Mus. (Nat. Hist.).
- Yamamoto, H. 1969. *Culex tritaeniorhynchus* and *Culex pseudovishnui* as the vector of Japanese Encephalitis. *Jap. J. Zool.*, 20: 117.